



MISSION TOWERS

3975-3979 Freedom Circle
Santa Clara, California





MISSION TOWERS FEATURES

- Prestigious twin 12-story, Class A office buildings totaling 584,000 S.F.
- Superior identity and location with Interstate 101 frontage
- Dramatic 2-story lobby with modern high-image finishes
- Building & elevator card-key access with 24-hour on-site security
- Fitness center including new equipment, showers, and lockers
- 3.5/1,000 parking ratio with 4-story dedicated parking garage
- Planned renovation of outdoor court yard featuring food from local restaurants, food vendors and cafes

MISSION TOWERS PROJECT HIGHLIGHTS

- Excellent access to Interstate 101 and Highway 237
- Caltrain shuttle service to/from Lawrence Station
- Located near Caltrain and ACE train transit stations
- Immediate proximity to hotels, restaurants, and retail
- Minutes from San Jose International Airport and San Francisco 49ers Stadium
- Prominent Santa Clara location with tremendous identity
- Interstate 101 exposure to more than 300,000 vehicles per day
- Near corporate users including Intel, McAfee, Yahoo!, EMC and Palo Alto Networks

Contact:

MARK BODIE
+1 650 815 2212
mark.bodie@am.jll.com
License #: 01941415

SCOTT MATHISEN
+1 650 815 2201
scott.mathisen@am.jll.com
License #: 00898695

GREGG WALKER
+1 650 815 2206
gregg.walker@am.jll.com
License #: 01276063





PROJECT SPECIFICATIONS

Building address:	3975-3979 Freedom Circle Santa Clara, CA 95054	Finish ceiling height:	9' Typical
Year constructed:	2000	Main lobby height:	Approximately 30'
Interiors renovated:	2006	Window module:	5' Width
Building architect:	Hellmuth Obata + Kassabaum	Window dimensions:	Continuous glassline
Interior architect:	Gensler	Column spacing:	30' Center to center
Contractor:	Webcor Builders	Power:	400 Amps/208 Volt & 100 Amps/480 Volt Per Floor
Exterior material:	Glass & metal panel custom curtainwall	Restroom fixtures:	Granite counter tops and ceramic tile floor
Number of floors:	12	Elevators:	OTIS, 5 passenger, 1 freight
Total rentable area:	Mission Tower I - ±292,908 S.F. Mission Tower II - ±292,040 S.F.	Security:	Key card entry and elevator control closed circuit TV surveillance
Typical floor size:	Mission Tower I - ±26,077 S.F. Mission Tower II - ±25,500 S.F.	Parking:	Above ground garage (4 stories with 2 elevators) 3.5/1,000 parking ratio
Approx. load factors:	14%	HVAC:	VAV terminal units
Slab-to-slab height:	13' 6"	Total cooling capacity:	800 Tons
1st Floor slab-to-slab:	16'		

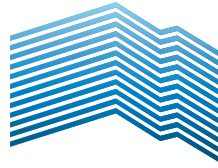
Contact:

MARK BODIE
+1 650 815 2212
mark.bodie@am.jll.com
License #: 01941415

SCOTT MATHISEN
+1 650 815 2201
scott.mathisen@am.jll.com
License #: 00898695

GREGG WALKER
+1 650 815 2206
gregg.walker@am.jll.com
License #: 01276063





MISSION TOWERS

3975-3979 Freedom Circle
Santa Clara, California

MISSION TOWERS AVAILABILITIES

Mission Towers I

Floor // Suite	RSF	Availability
2nd // 230	± 5,475	Immediate

Mission Towers II

Floor // Suite	RSF	Availability
1st // 100	± 5,609	1/1/2015
2nd // 218	± 846	1/1/2015
2nd // 220	± 4,977	5/1/2015
2nd // 230	± 5,204	1/1/2015
3rd // 300	± 3,522	12/1/2014
3rd // 330	± 3,923	11/1/2014
5th // 500	± 17,395	3/1/2015
7th // 700	± 25,530	1/1/2015
8th // 800	± 25,543	1/1/2015
9th // 900	± 25,543	1/1/2015
10th // 1000	± 25,441	1/1/2015
11th // 1100	± 25,439	1/1/2015
12th // 1200	± 25,439	1/1/2015

Floors 7 through 12 can be combined for a total of ± 152,935 RSF

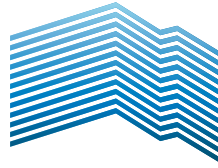
Contact:

MARK BODIE
+1 650 815 2212
mark.bodie@am.jll.com
License #: 01941415

SCOTT MATHISEN
+1 650 815 2201
scott.mathisen@am.jll.com
License #: 00898695

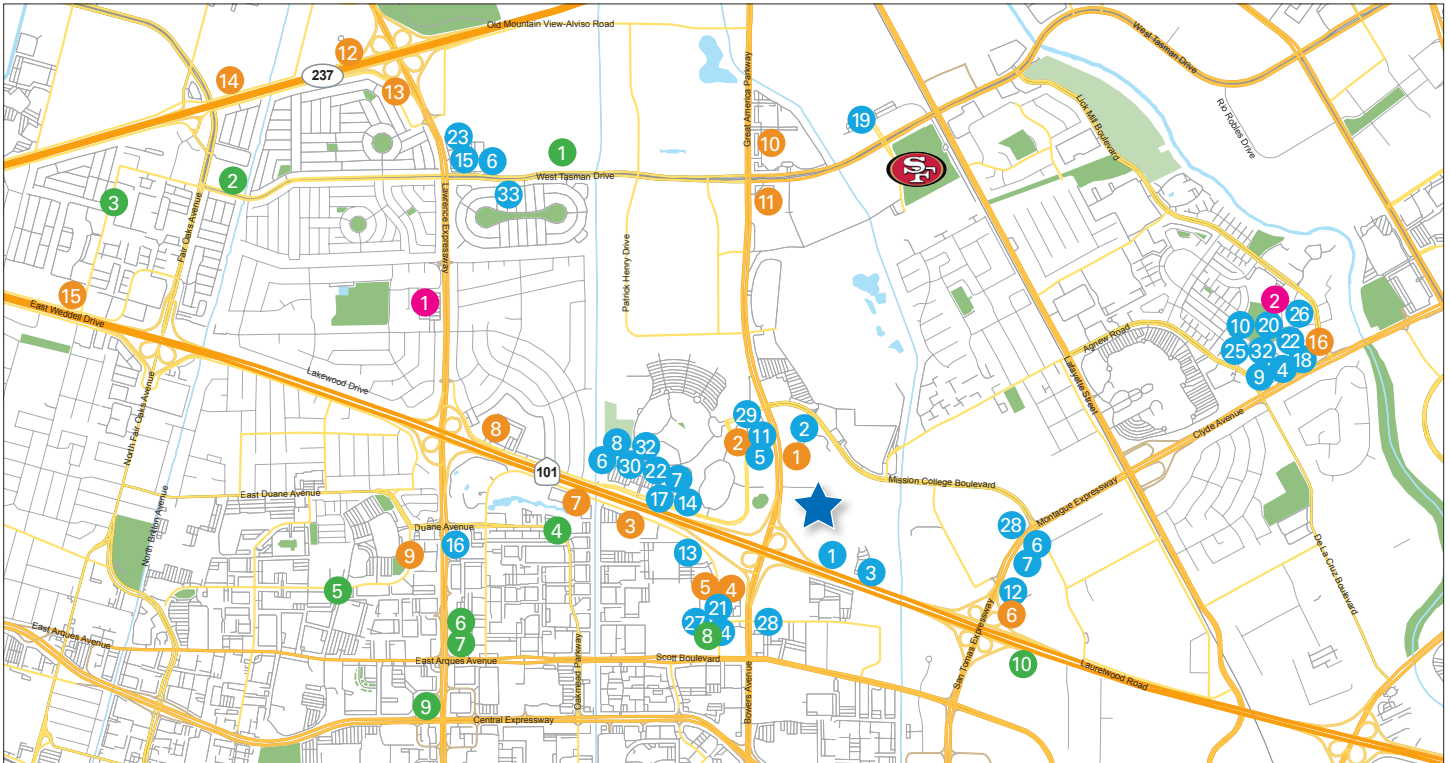
GREGG WALKER
+1 650 815 2206
gregg.walker@am.jll.com
License #: 01276063





MISSION TOWERS

3975-3979 Freedom Circle
Santa Clara, California



AREA AMENITIES



RESTAURANTS

1. Birks
2. Parcel 104
3. Pedro's
4. Piatti
5. Bennigans
6. Subway
7. Starbucks
8. Mexicali Grill
9. Red Robin
10. Chipotle
11. IHOP
12. Montague's Cafe
13. El Torito
14. In-N-Out Burger
15. Gobi Mongolian BBQ

16. Coco's Bakery Restaurant
17. Tomatina
18. Peet's Coffee & Tea
19. David's Restaurant
20. Fantasia Coffee & Tea
21. Jack in the Box
22. Jamba Juice
23. Steven's Philly Cheesesteak
24. McDonald's
25. Premier Pizza
26. Mezbaan Bar & Indian
27. Sizzler
28. Specialty's Cafe & Bakery
29. Amarin Thai
30. World Wrapps
31. The Prolific Oven
32. Yo Yo Sushi
33. Sunny Buffet

HOTELS

1. Santa Clara Marriott
2. Avatar Hotel
3. The Plaza Suites
4. Embassy Suites Hotel
5. TownePlace Suites
6. Biltmore Hotel and Suites
7. Residence Inn I
8. Ramada Inn
9. Residence Inn II
10. Hyatt
11. Hilton Santa Clara
12. Country Inn Suites
13. Quality Inn
14. Extended Stay American
15. Americas Best Value Inn
16. Hyatt House

HEALTH CLUBS

1. Smash Gyms
2. FTX Martial Arts & Fitness
3. Sunnyvale Fitness Motivation
4. City Sport Physical Therapy
5. Sunnyvale Fitness
6. Yoga @ Cindy's, Inc.
7. 24 Hour Fitness
8. Bay Club Santa Clara
9. Morph FITT
10. Gold's Gym

SHOPPING CENTERS

1. Lakewood Shopping Center
2. Rivermark Village

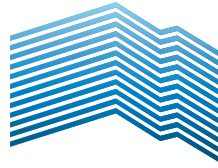
Contact:

MARK BODIE
+1 650 815 2212
mark.bodie@am.jll.com
License #: 01941415

SCOTT MATHISEN
+1 650 815 2201
scott.mathisen@am.jll.com
License #: 00898695

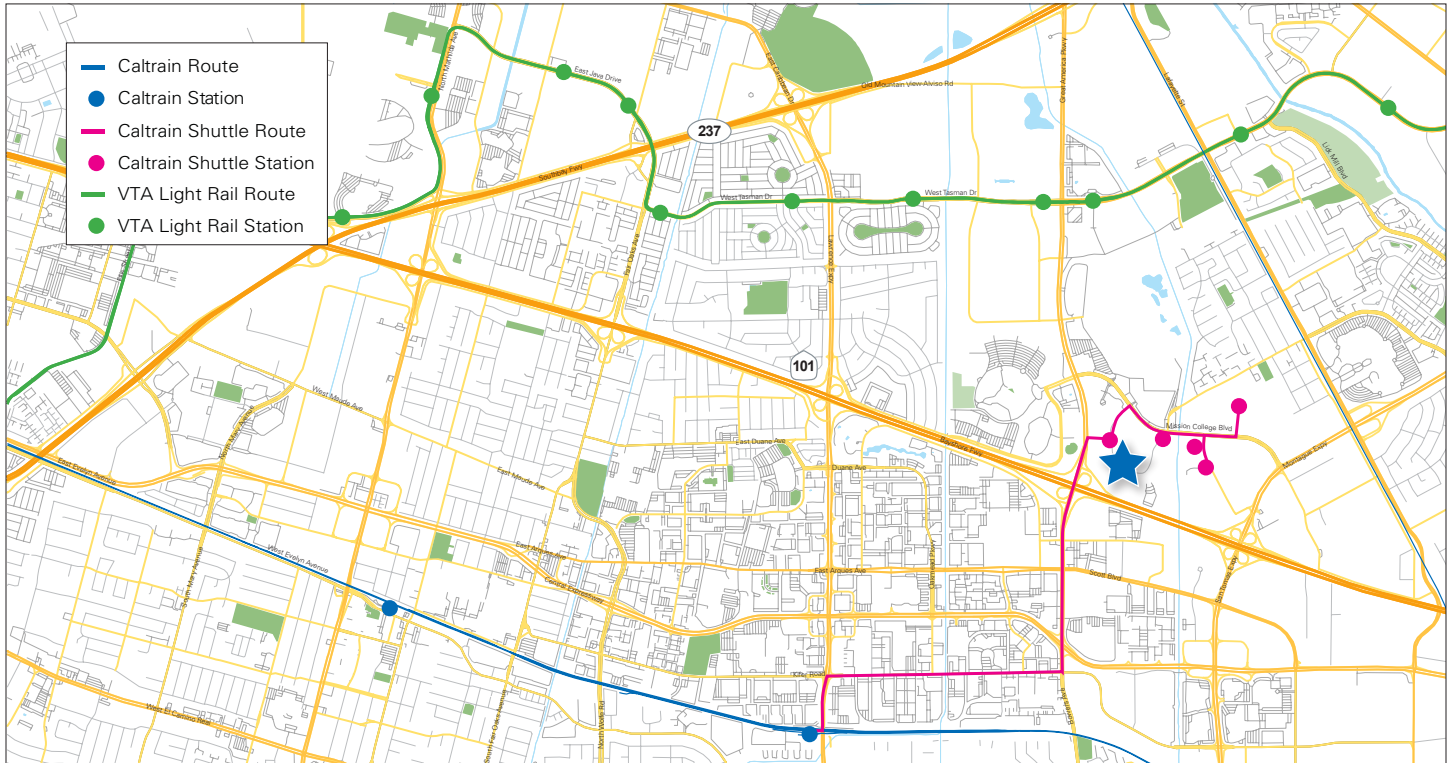
GREGG WALKER
+1 650 815 2206
gregg.walker@am.jll.com
License #: 01276063





MISSION TOWERS

3975-3979 Freedom Circle
Santa Clara, California



MISSION TOWERS TRANSPORTATION

Caltrain

- Transportation line from San Francisco to Gilroy
- Lawrence Station is closest stop
- Mission Shuttle (operated by Caltrain) to/from 3989 Hichborn and Lawrence Station (14-19 minutes)
- 50+ local and limited weekday stops (to/from)
 - San Francisco: 61 Minutes
 - San Mateo: 42 Minutes
 - Palo Alto: 15 Minutes
 - Mountain View: 7 Minutes
 - Downtown San Jose: 12 Minutes

VTA Light Rail/Bus

- Light Rail service to/from Mountain View to South San Jose (Old Ironside or Great America Station)
- Bus Service to/from Great America Station to Freedom Circle/Mission College Blvd.
- San Jose Diridon Station connection to Caltrain, Amtrak, ACE and DASH

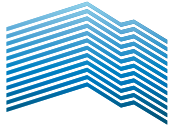
Contact:

MARK BODIE
+1 650 815 2212
mark.bodie@am.jll.com
License #: 01941415

SCOTT MATHISEN
+1 650 815 2201
scott.mathisen@am.jll.com
License #: 00898695

GREGG WALKER
+1 650 815 2206
gregg.walker@am.jll.com
License #: 01276063

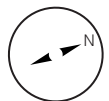
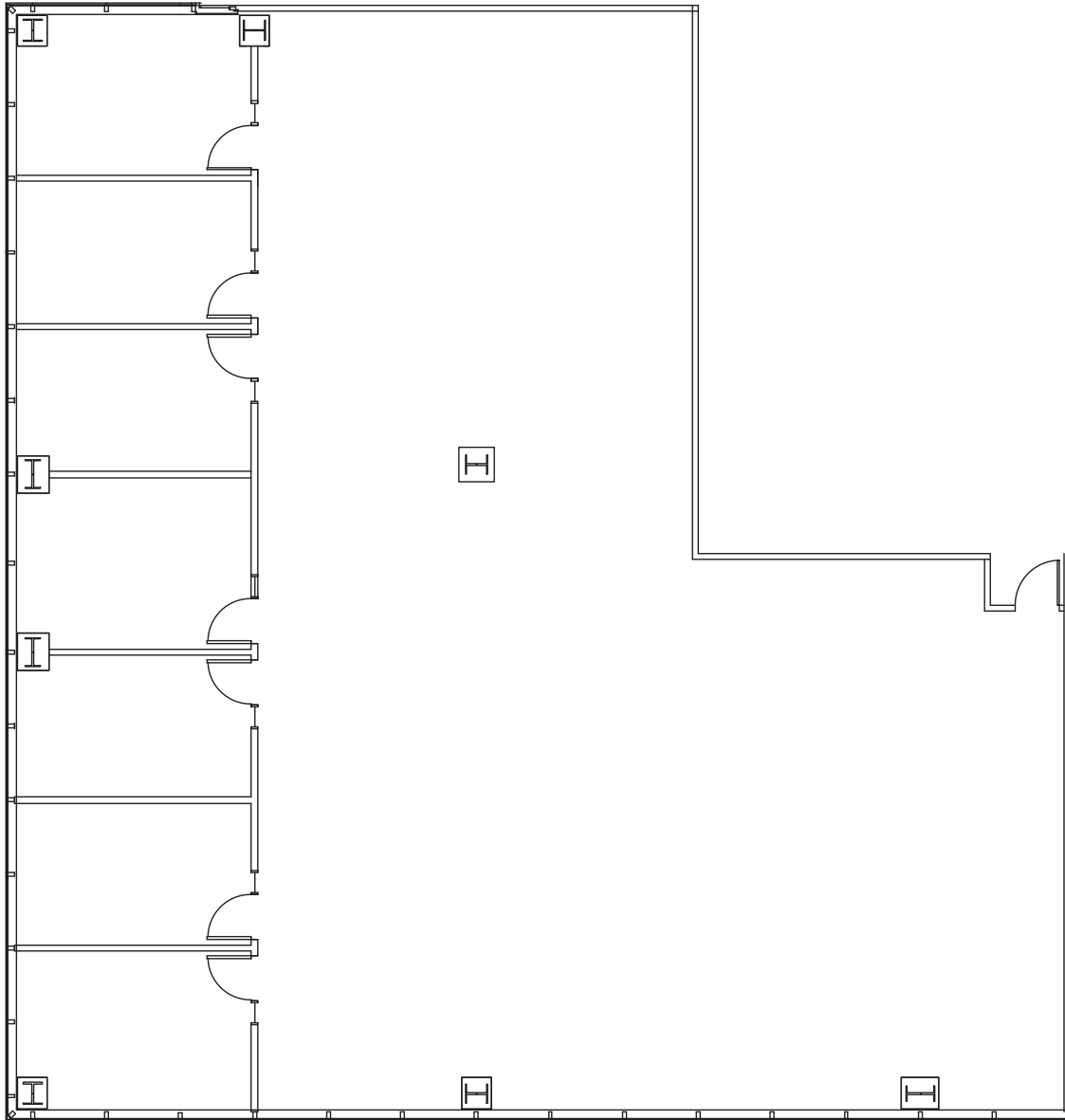
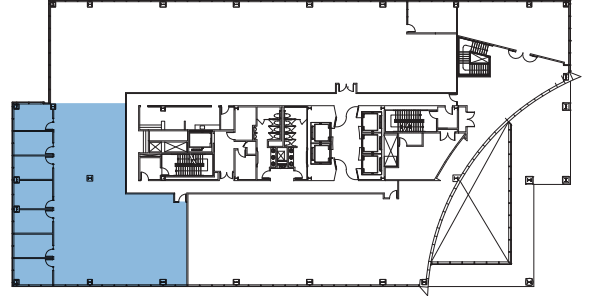




MISSION TOWERS

3975-3979 Freedom Circle
Santa Clara, California

2ND FLOOR, SUITE 230
5,475 SF



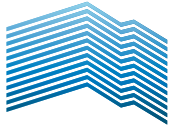
Contact:

MARK BODIE
+1 650 815 2212
mark.bodie@am.jll.com
License #: 01941415

SCOTT MATHISEN
+1 650 815 2201
scott.mathisen@am.jll.com
License #: 00898695

GREGG WALKER
+1 650 815 2206
gregg.walker@am.jll.com
License #: 01276063

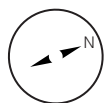
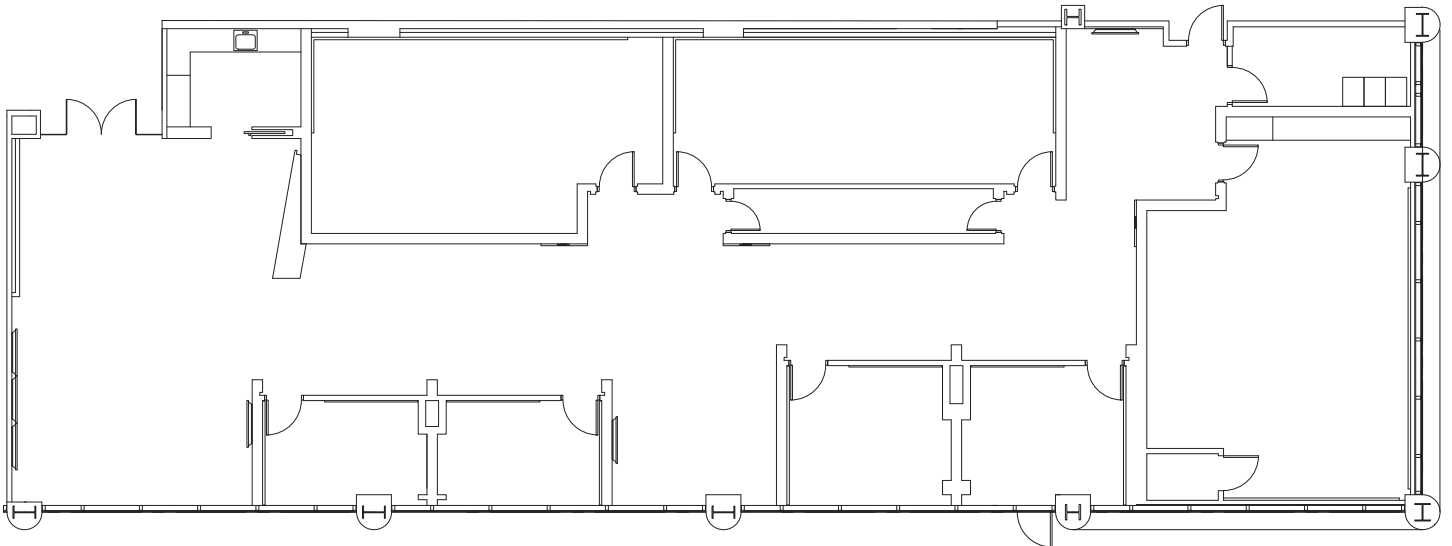
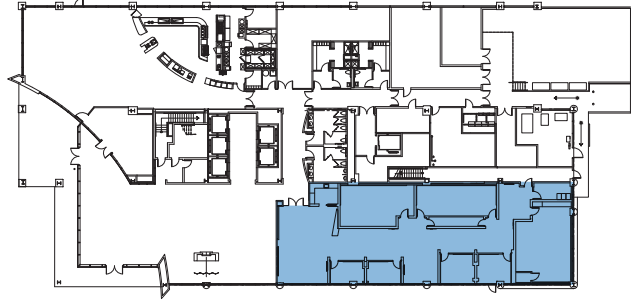




MISSION TOWERS

3975-3979 Freedom Circle
Santa Clara, California

1ST FLOOR, SUITE 100
5,609 SF



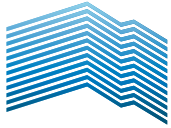
Contact:

MARK BODIE
+1 650 815 2212
mark.bodie@am.jll.com
License #: 01941415

SCOTT MATHISEN
+1 650 815 2201
scott.mathisen@am.jll.com
License #: 00898695

GREGG WALKER
+1 650 815 2206
gregg.walker@am.jll.com
License #: 01276063

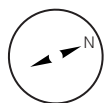
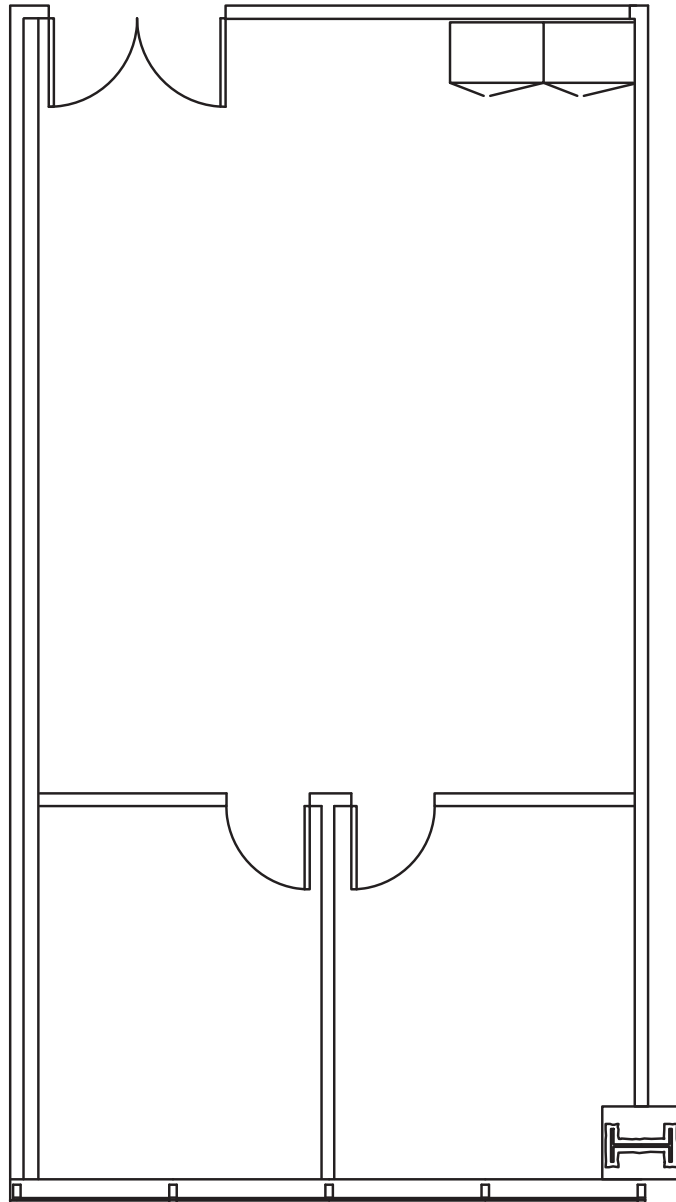
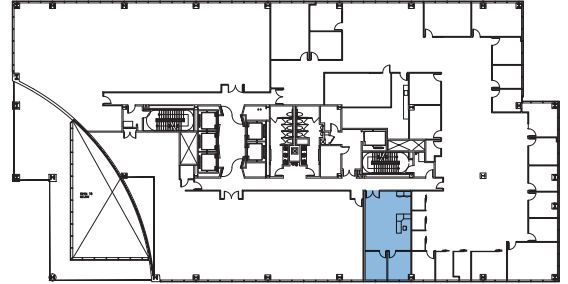




MISSION TOWERS

3975-3979 Freedom Circle
Santa Clara, California

2ND FLOOR, SUITE 218
846 SF



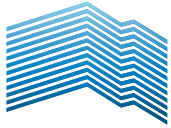
Contact:

MARK BODIE
+1 650 815 2212
mark.bodie@am.jll.com
License #: 01941415

SCOTT MATHISEN
+1 650 815 2201
scott.mathisen@am.jll.com
License #: 00898695

GREGG WALKER
+1 650 815 2206
gregg.walker@am.jll.com
License #: 01276063

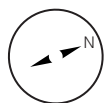
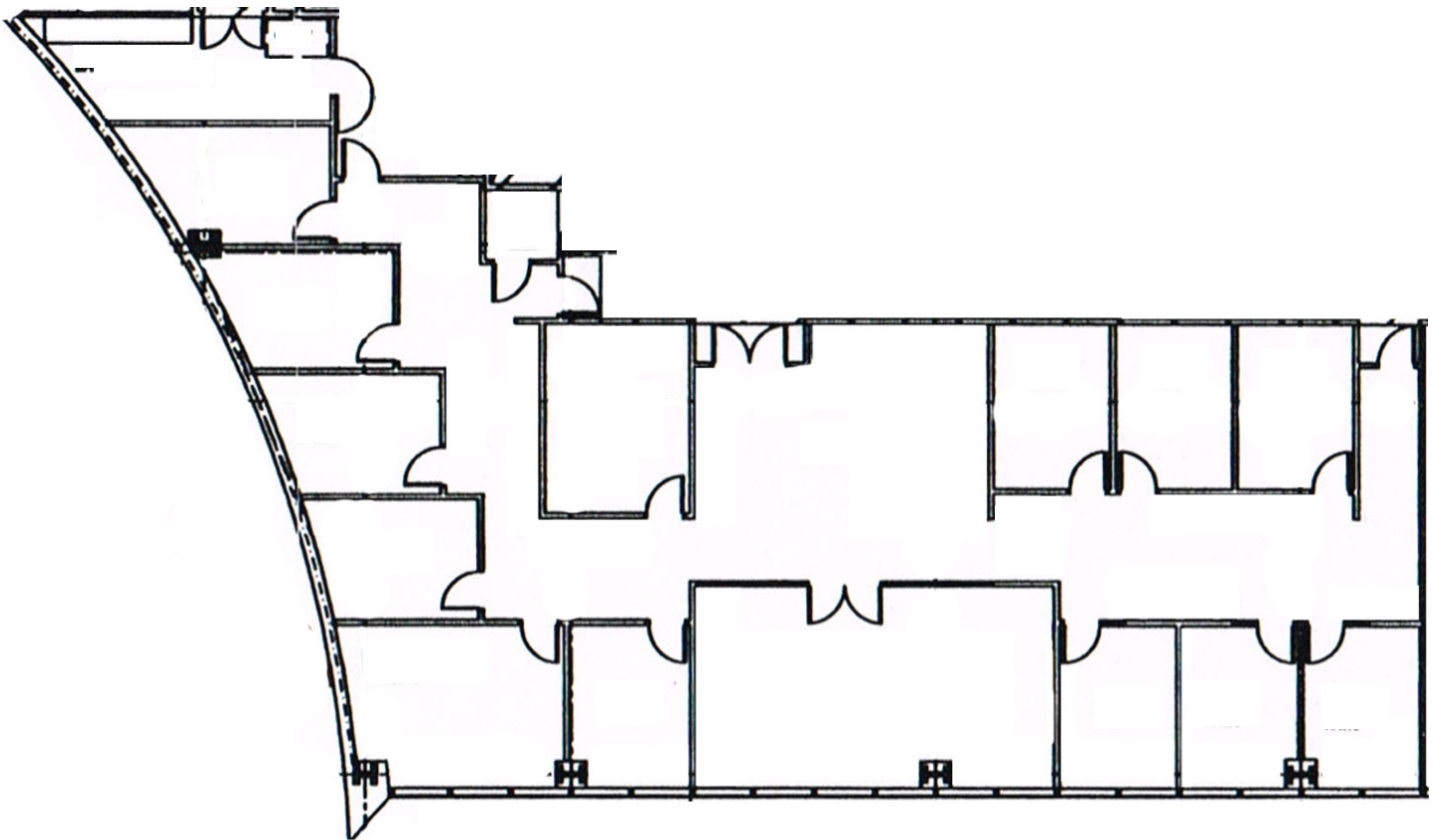
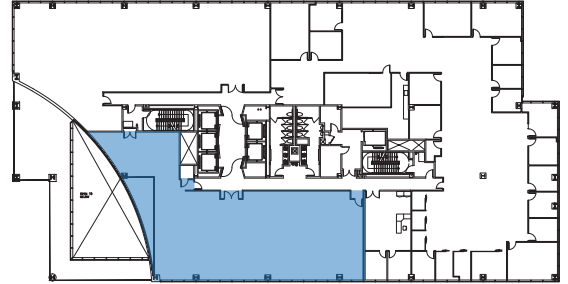




MISSION TOWERS

3975-3979 Freedom Circle
Santa Clara, California

2ND FLOOR, SUITE 220
4,977 SF



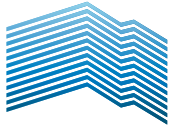
Contact:

MARK BODIE
+1 650 815 2212
mark.bodie@am.jll.com
License #: 01941415

SCOTT MATHISEN
+1 650 815 2201
scott.mathisen@am.jll.com
License #: 00898695

GREGG WALKER
+1 650 815 2206
gregg.walker@am.jll.com
License #: 01276063

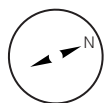
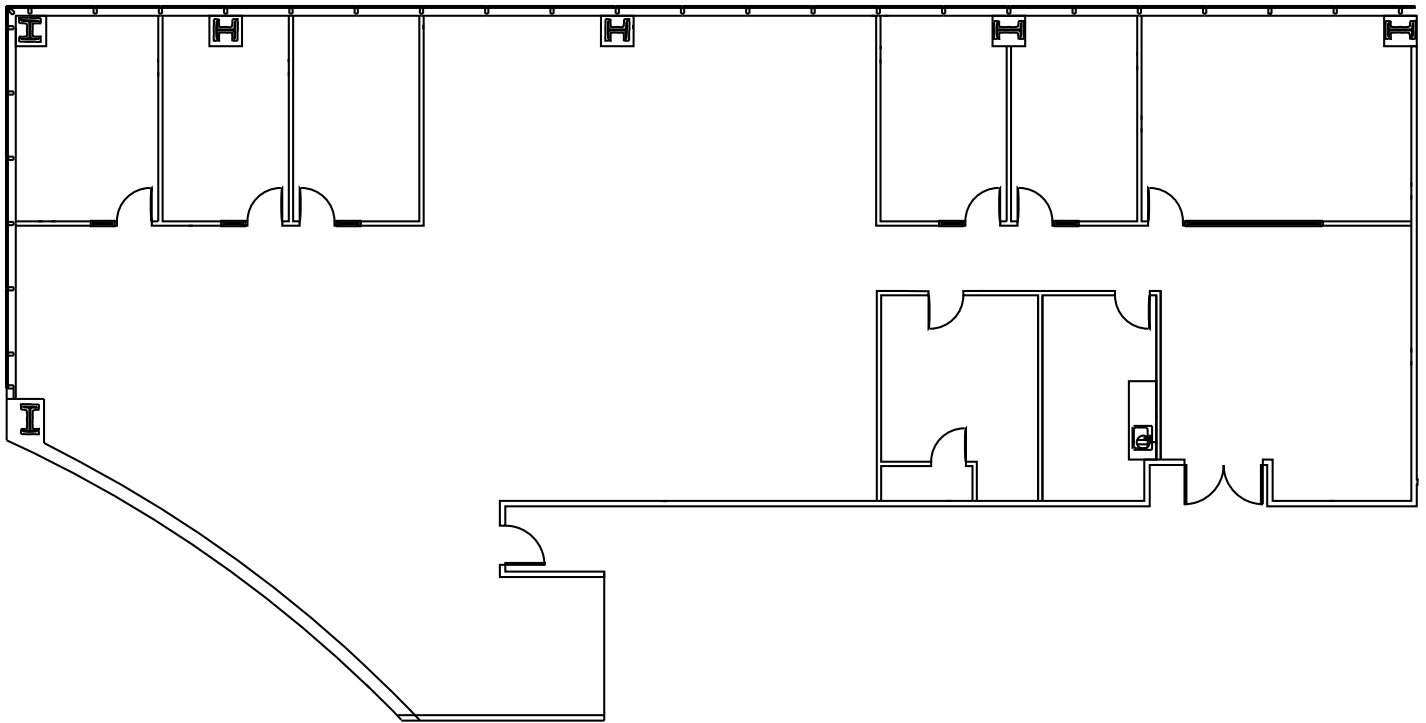
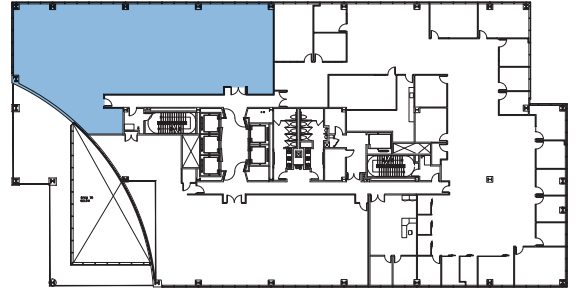




MISSION TOWERS

3975-3979 Freedom Circle
Santa Clara, California

2ND FLOOR, SUITE 230
5,204 SF



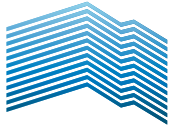
Contact:

MARK BODIE
+1 650 815 2212
mark.bodie@am.jll.com
License #: 01941415

SCOTT MATHISEN
+1 650 815 2201
scott.mathisen@am.jll.com
License #: 00898695

GREGG WALKER
+1 650 815 2206
gregg.walker@am.jll.com
License #: 01276063

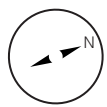
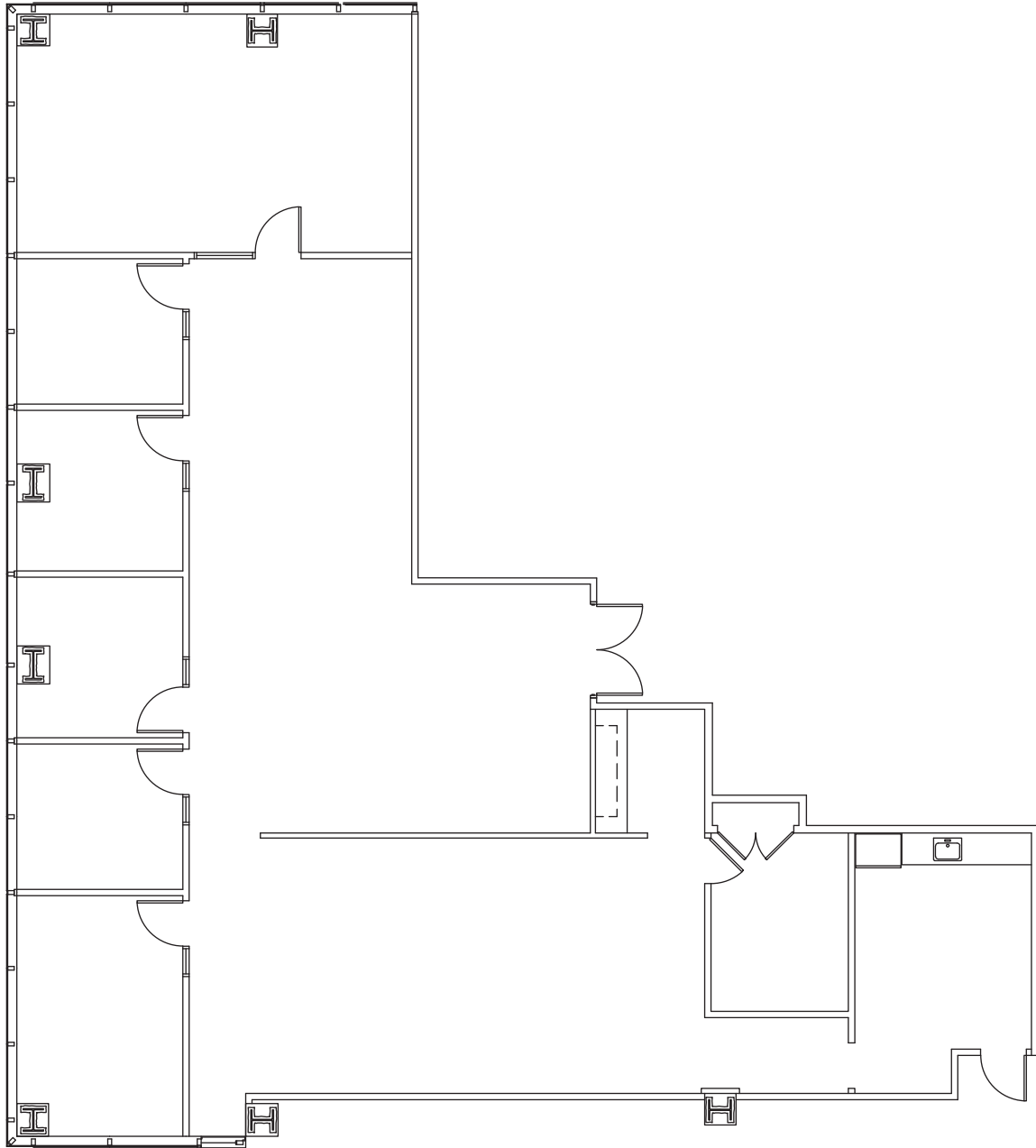
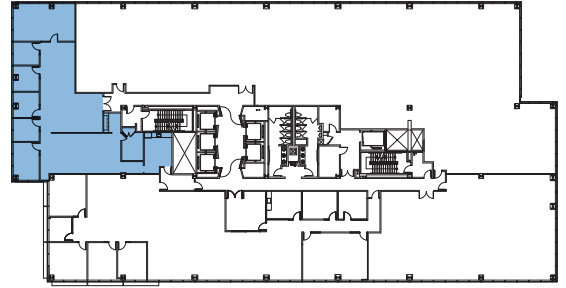




MISSION TOWERS

3975-3979 Freedom Circle
Santa Clara, California

3RD FLOOR, SUITE 300
3,522 SF



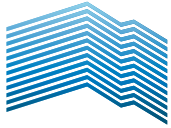
Contact:

MARK BODIE
+1 650 815 2212
mark.bodie@am.jll.com
License #: 01941415

SCOTT MATHISEN
+1 650 815 2201
scott.mathisen@am.jll.com
License #: 00898695

GREGG WALKER
+1 650 815 2206
gregg.walker@am.jll.com
License #: 01276063

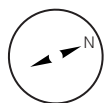
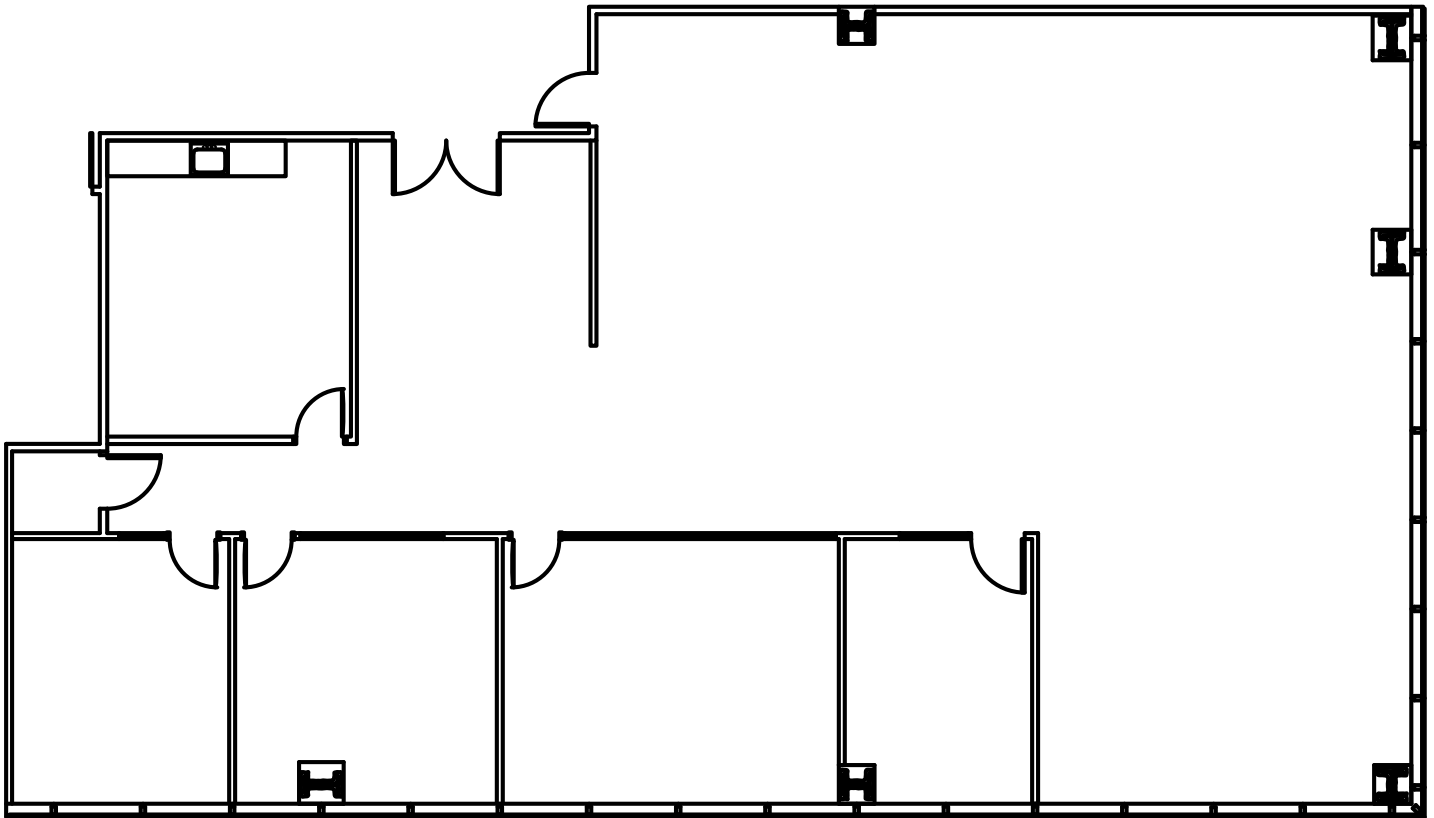
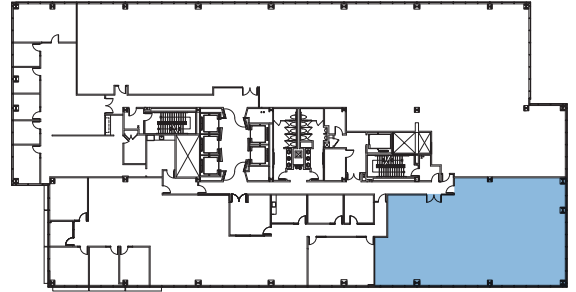




MISSION TOWERS

3975-3979 Freedom Circle
Santa Clara, California

3RD FLOOR, SUITE 330
3,923 SF



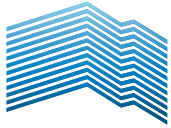
Contact:

MARK BODIE
+1 650 815 2212
mark.bodie@am.jll.com
License #: 01941415

SCOTT MATHISEN
+1 650 815 2201
scott.mathisen@am.jll.com
License #: 00898695

GREGG WALKER
+1 650 815 2206
gregg.walker@am.jll.com
License #: 01276063

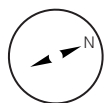
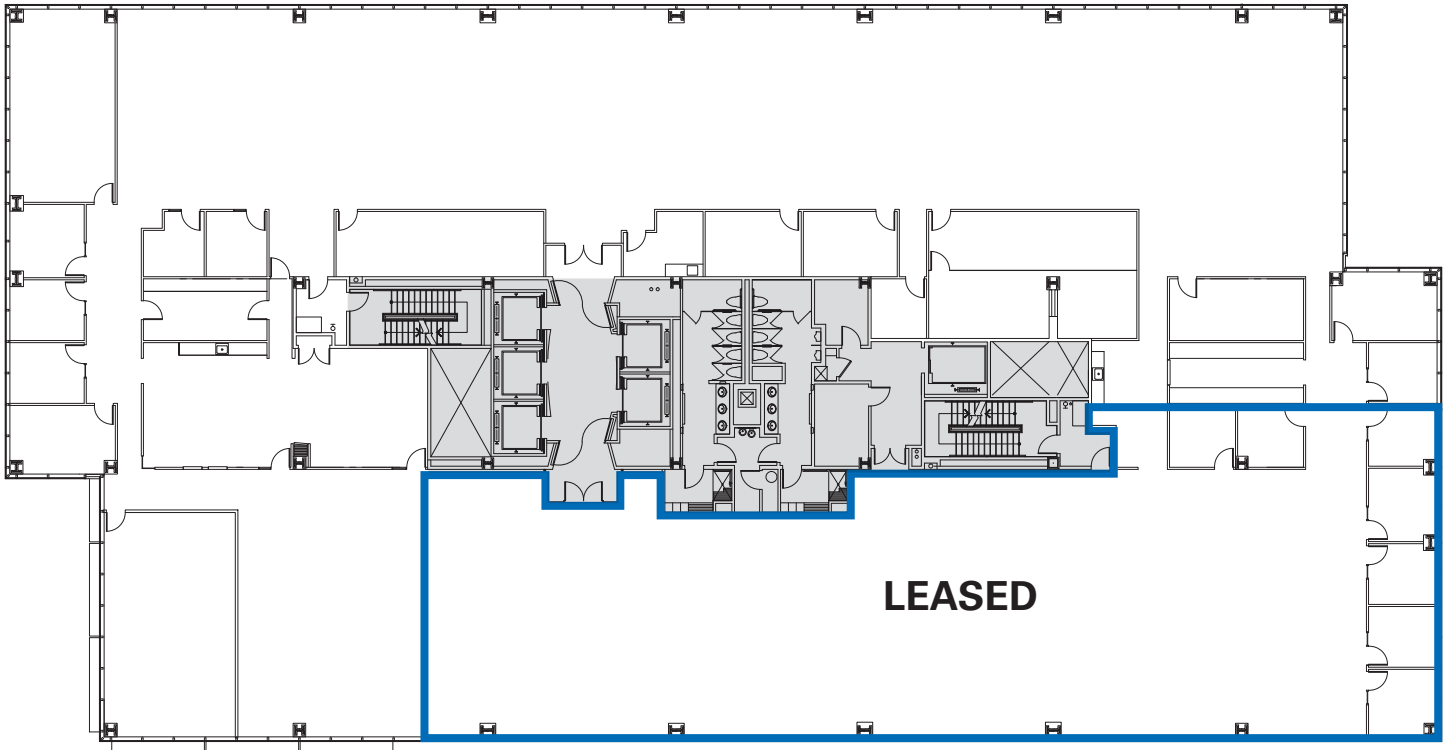




MISSION TOWERS

3975-3979 Freedom Circle
Santa Clara, California

5TH FLOOR
±17,395 SF



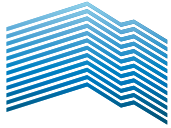
Contact:

MARK BODIE
+1 650 815 2212
mark.bodie@am.jll.com
License #: 01941415

SCOTT MATHISEN
+1 650 815 2201
scott.mathisen@am.jll.com
License #: 00898695

GREGG WALKER
+1 650 815 2206
gregg.walker@am.jll.com
License #: 01276063

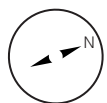
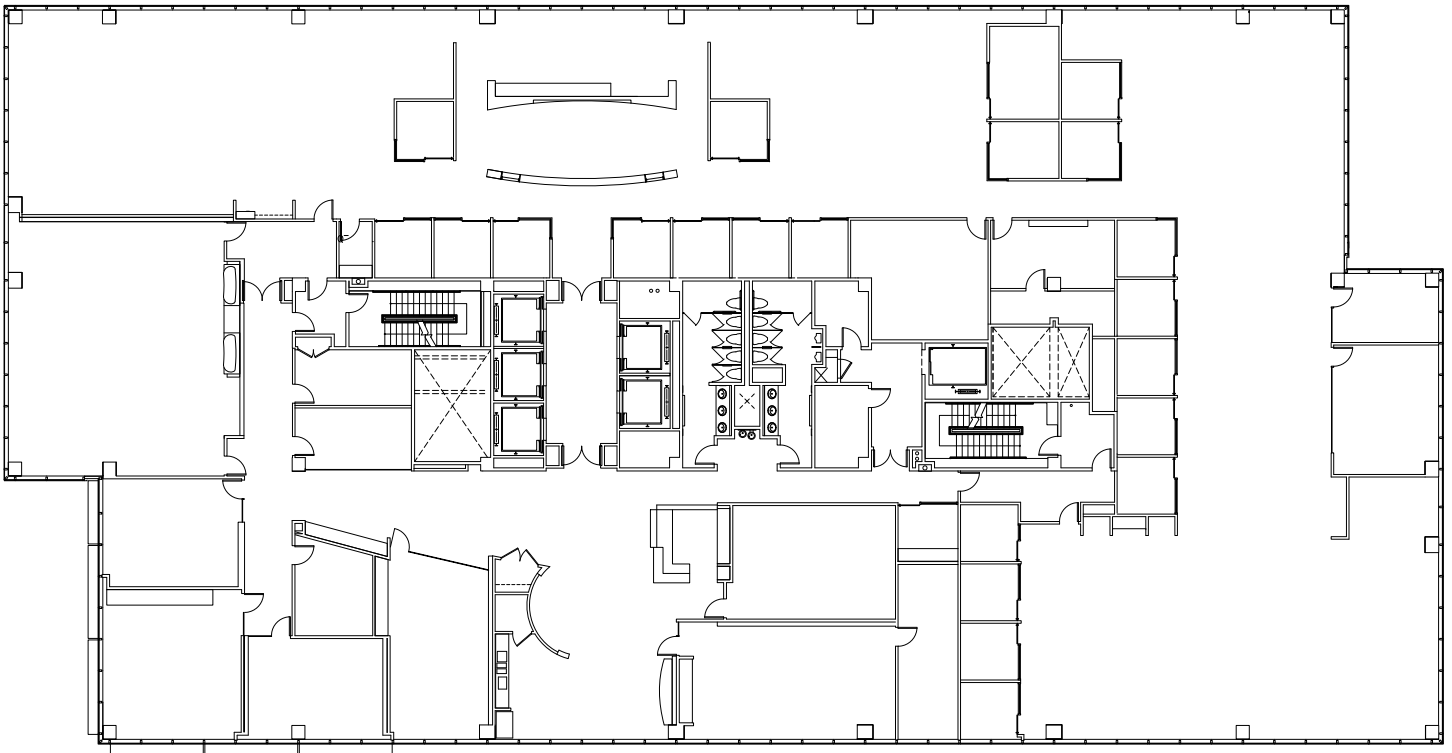




MISSION TOWERS

3975-3979 Freedom Circle
Santa Clara, California

7TH FLOOR
25,530 SF



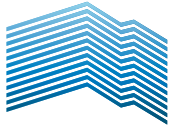
Contact:

MARK BODIE
+1 650 815 2212
mark.bodie@am.jll.com
License #: 01941415

SCOTT MATHISEN
+1 650 815 2201
scott.mathisen@am.jll.com
License #: 00898695

GREGG WALKER
+1 650 815 2206
gregg.walker@am.jll.com
License #: 01276063

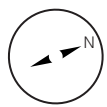
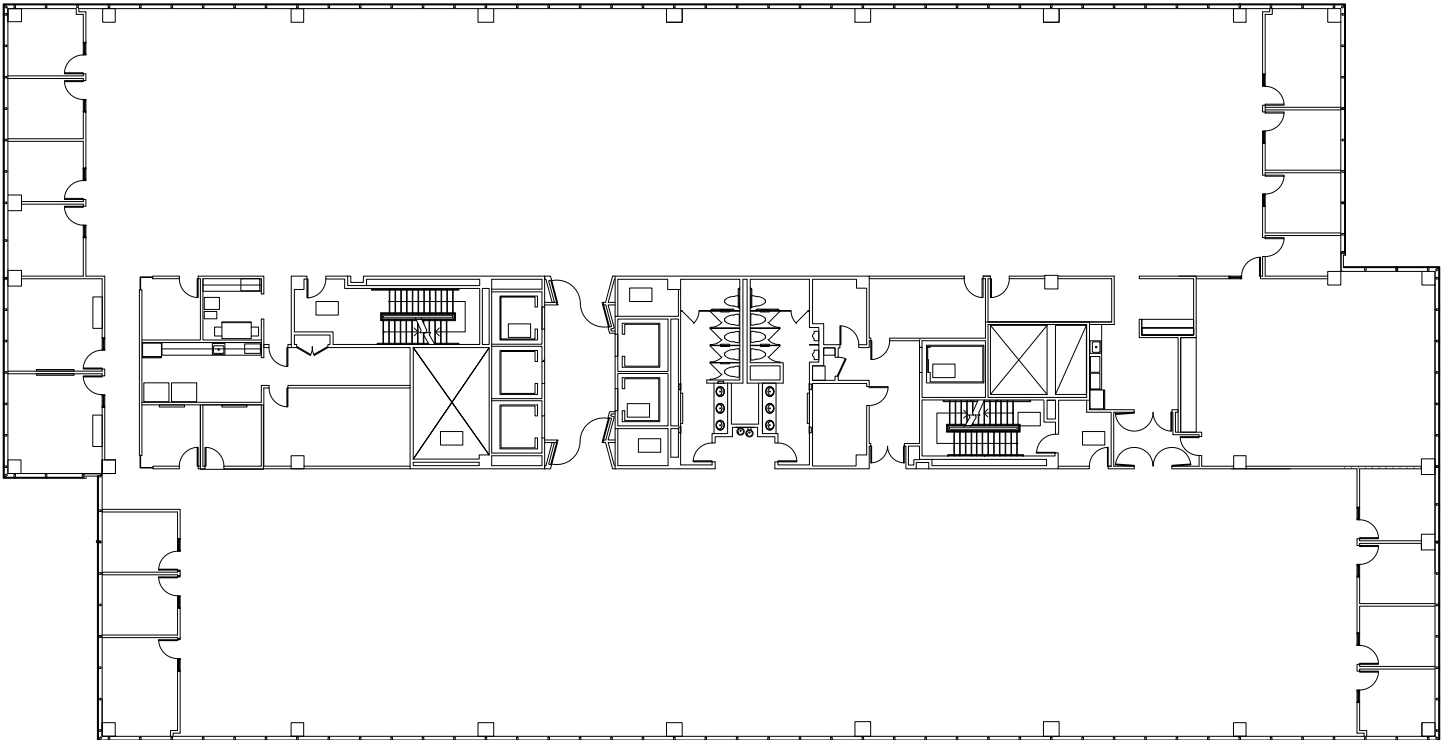




MISSION TOWERS

3975-3979 Freedom Circle
Santa Clara, California

8TH FLOOR
25,543 SF



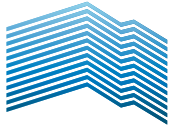
Contact:

MARK BODIE
+1 650 815 2212
mark.bodie@am.jll.com
License #: 01941415

SCOTT MATHISEN
+1 650 815 2201
scott.mathisen@am.jll.com
License #: 00898695

GREGG WALKER
+1 650 815 2206
gregg.walker@am.jll.com
License #: 01276063

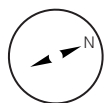
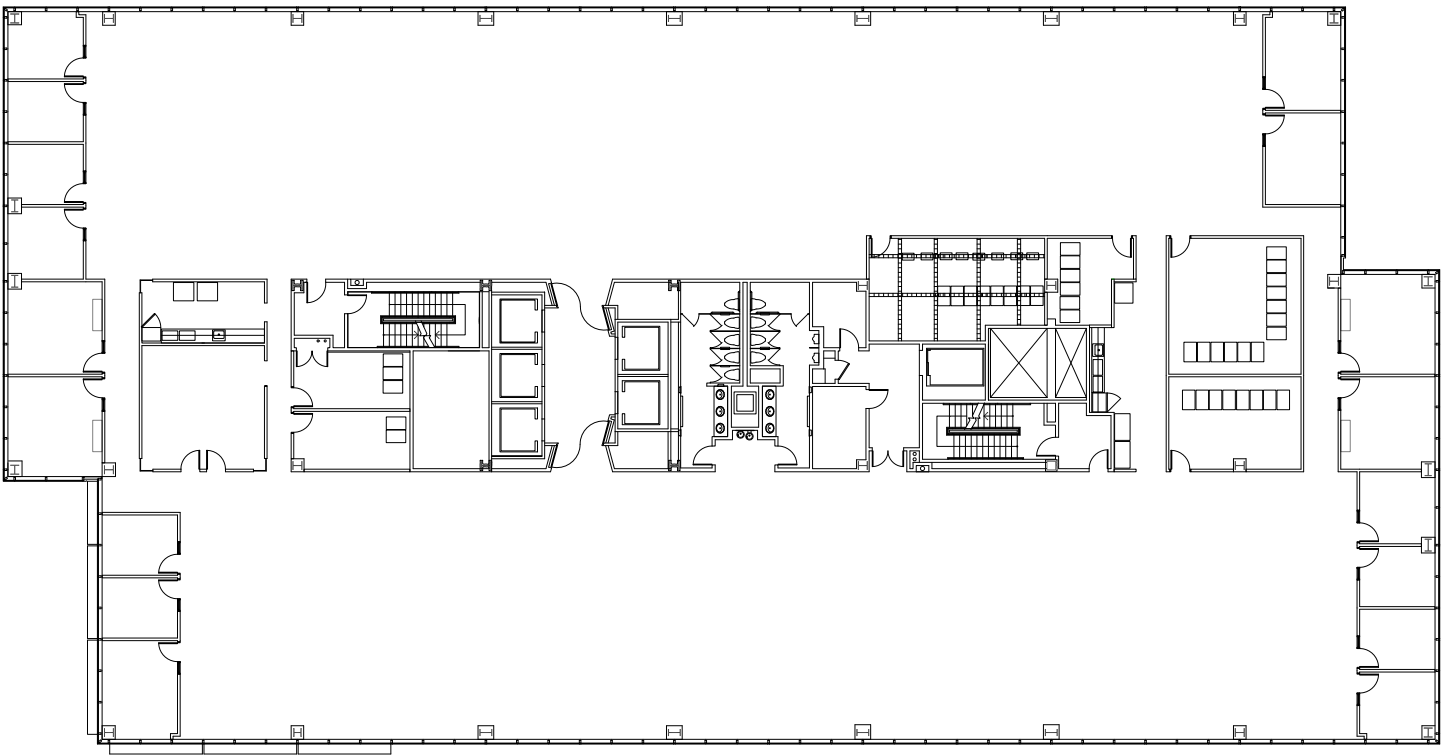




MISSION TOWERS

3975-3979 Freedom Circle
Santa Clara, California

9TH FLOOR
25,543 SF



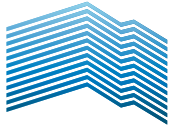
Contact:

MARK BODIE
+1 650 815 2212
mark.bodie@am.jll.com
License #: 01941415

SCOTT MATHISEN
+1 650 815 2201
scott.mathisen@am.jll.com
License #: 00898695

GREGG WALKER
+1 650 815 2206
gregg.walker@am.jll.com
License #: 01276063

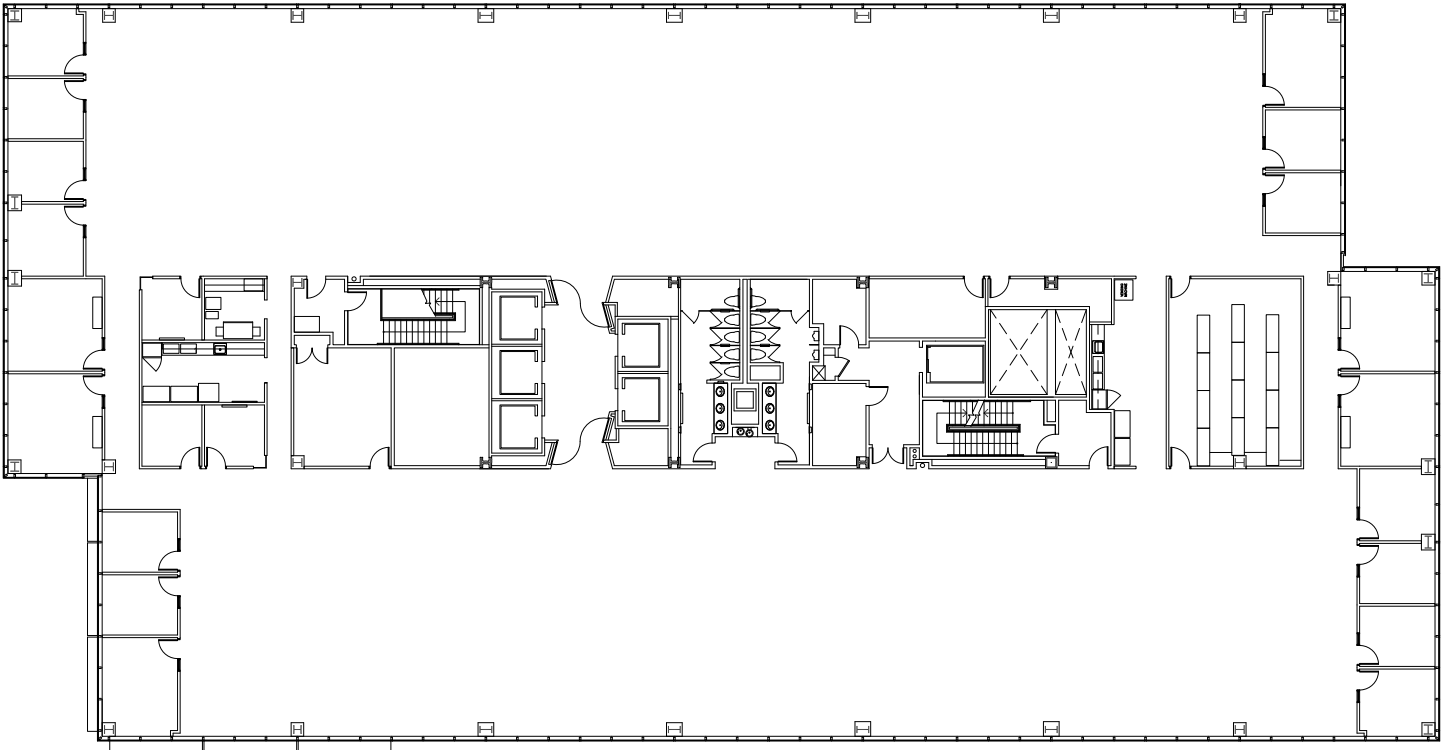




MISSION TOWERS

3975-3979 Freedom Circle
Santa Clara, California

10TH FLOOR
25,441 SF



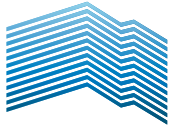
Contact:

MARK BODIE
+1 650 815 2212
mark.bodie@am.jll.com
License #: 01941415

SCOTT MATHISEN
+1 650 815 2201
scott.mathisen@am.jll.com
License #: 00898695

GREGG WALKER
+1 650 815 2206
gregg.walker@am.jll.com
License #: 01276063

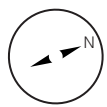
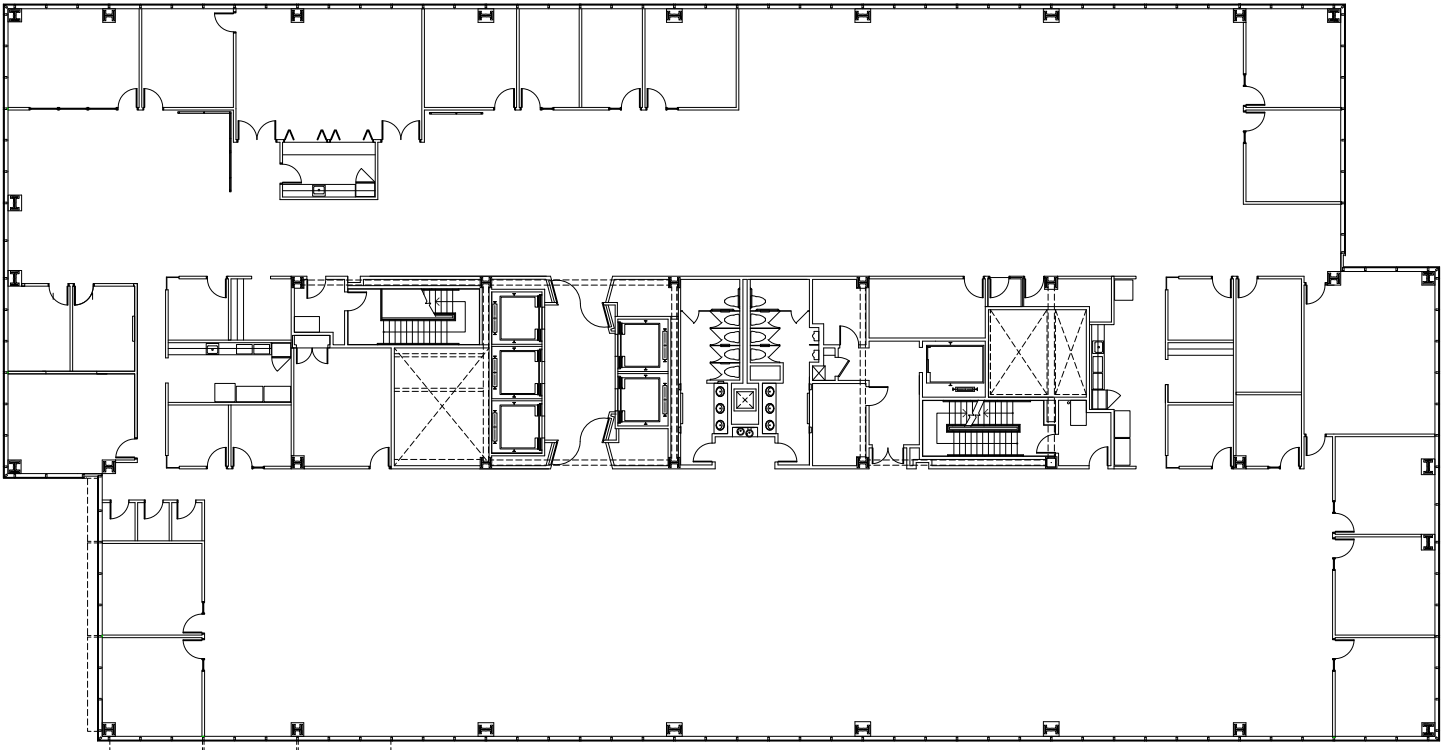




MISSION TOWERS

3975-3979 Freedom Circle
Santa Clara, California

11TH FLOOR
25,439 SF



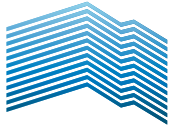
Contact:

MARK BODIE
+1 650 815 2212
mark.bodie@am.jll.com
License #: 01941415

SCOTT MATHISEN
+1 650 815 2201
scott.mathisen@am.jll.com
License #: 00898695

GREGG WALKER
+1 650 815 2206
gregg.walker@am.jll.com
License #: 01276063

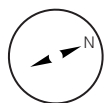
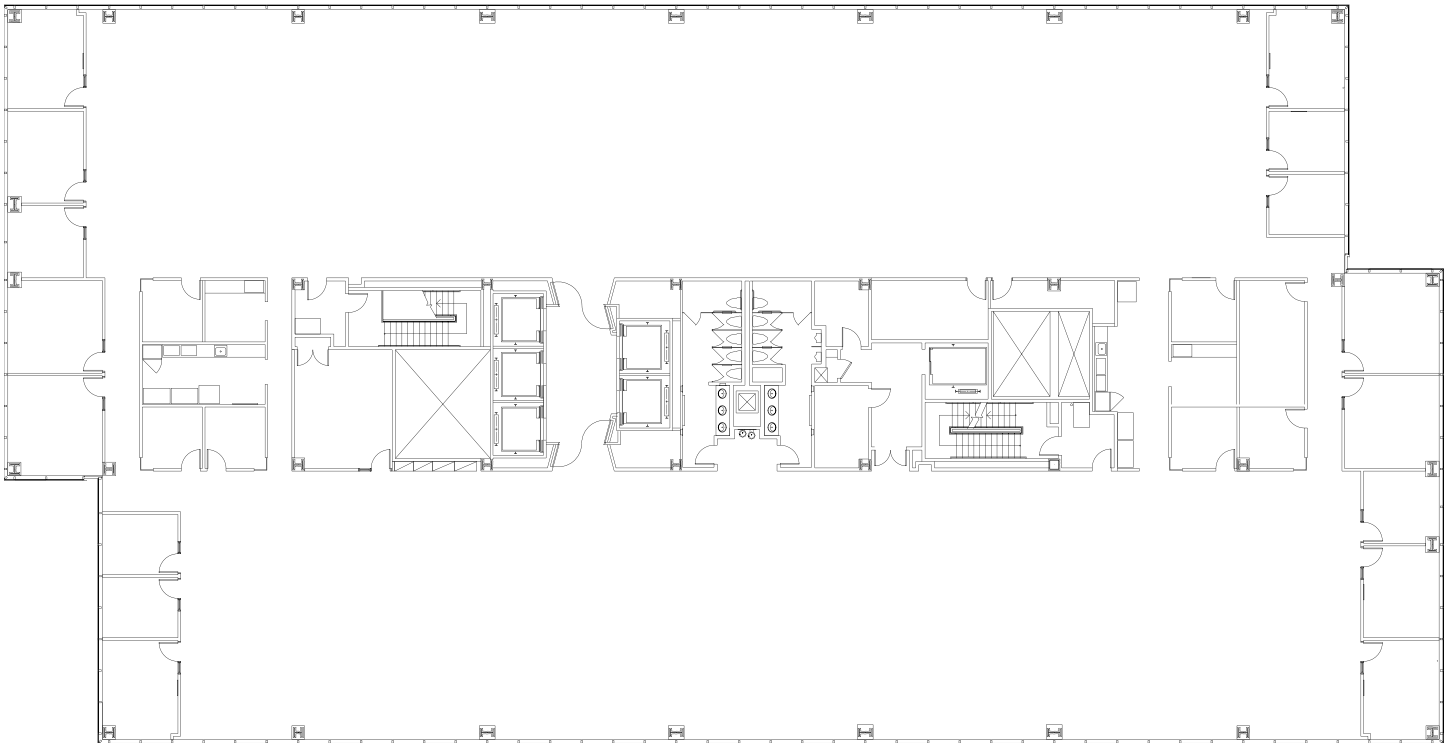




MISSION TOWERS

3975-3979 Freedom Circle
Santa Clara, California

12TH FLOOR
25,439 SF



Contact:

MARK BODIE
+1 650 815 2212
mark.bodie@am.jll.com
License #: 01941415

SCOTT MATHISEN
+1 650 815 2201
scott.mathisen@am.jll.com
License #: 00898695

GREGG WALKER
+1 650 815 2206
gregg.walker@am.jll.com
License #: 01276063

